

Angle Mount DIP Sockets 500 Series

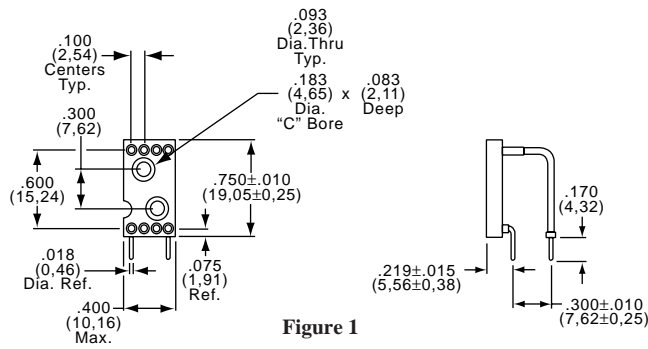


Figure 1

PART NUMBERS / STANDARD CONFIGURATIONS

Part Number	Figure	Number of Contacts	Description
508-AG8D	1	8	Right angle mtg., printed circuit
508-AG4A	2	8	Horizontal mtg., solder pocket
508-AG4F	2	8	Horizontal mtg., 3 level solderless wrap

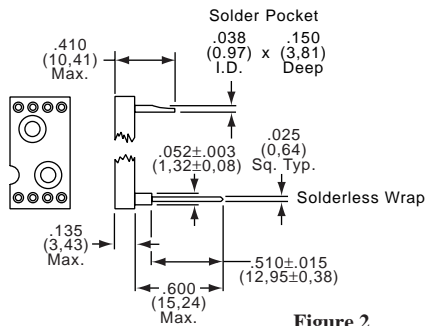


Figure 2

PART NUMBER / STANDARD CONFIGURATIONS

Part Number	Number of Contacts	A Max.	B	Description
508-AG7D	8	.400 (10,16)	One Hole Only	Right angle mtg., printed circuit
514-AG7D	14	.700 (17,78)	.400 (10,16)	
516-AG7D	16	.800 (20,32)	.500 (12,70)	
518-AG7D	18	.900 (22,86)	.600 (15,24)	
520-AG7D	20	1.000 (25,40)	.500 (12,70)	

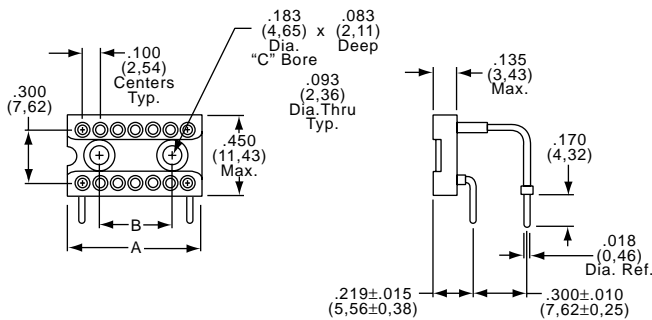


Figure 3

Horizontal Right Angle

PART NUMBER / STANDARD CONFIGURATIONS

Part Number	Number of Contacts	"A" Max.	"B" Max.	"C" Max.
514-AG21D	14	1.100 (27,49)	.900 (22,86)	.700 (17,78)
516-AG21D	16	1.220 (30,99)	1.010 (25,65)	.800 (20,32)

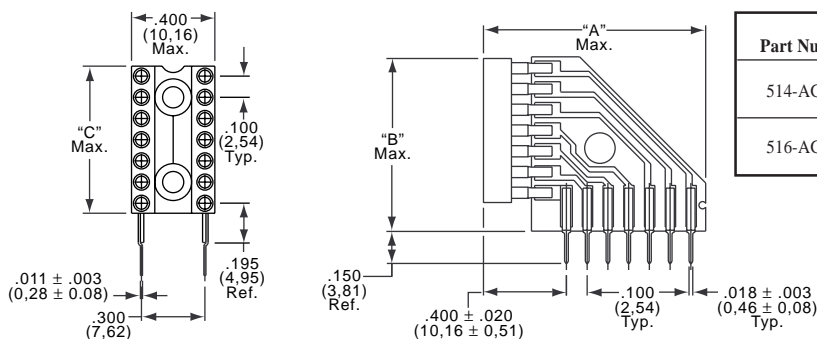


Figure 4

Vertical Right Angle

Need more technical information?

Consult your Thomas & Betts sales office listed on the back cover